

WHEATON GENERATING PLANT REPOWERING PROJECT

INFORMATION SHEET
WISCONSIN

JANUARY 2023



About firm dispatchable (always-available, 24/7) generation

Firm dispatchable plants, like our Wheaton Generating Plant, provide a reliable source of electricity that can be ramped up quickly to meet electricity needs of our customers when renewable energy sources, like wind and solar power, are variable or not available for extended durations.

Wheaton Generating Plant

The Wheaton Generating Plant in Eau Claire, Wisconsin, was constructed in 1972 and 1973 with an estimated design life of 30 years. The plant consists of six combustion turbines, including four dual fuel (natural gas and diesel fuel) units, one diesel fuel unit and one retired unit. Capacity is currently limited to 300 MW in the winter and 265 MW in the summer due to retirement of one unit. The Wheaton Generating Plant serves an essential role in Wisconsin electric system reliability and resiliency and also provides critical support for the integration of renewable energy.

Repowering project overview

Xcel Energy plans to replace all six units with modern, efficient equipment capable of operating on natural gas or diesel fuel. The equipment can also be upgraded to burn hydrogen or other zero-carbon fuels to meet future needs.

The upgraded plant will include one ~210-MW (summer peak) combustion turbine and five ~9-MW engine generators. The generation capacity is expected to be similar to the existing equipment. The new equipment will be located at the existing plant at 3008 80th St. in Wheaton, with minimal expansion of the property's operating footprint.

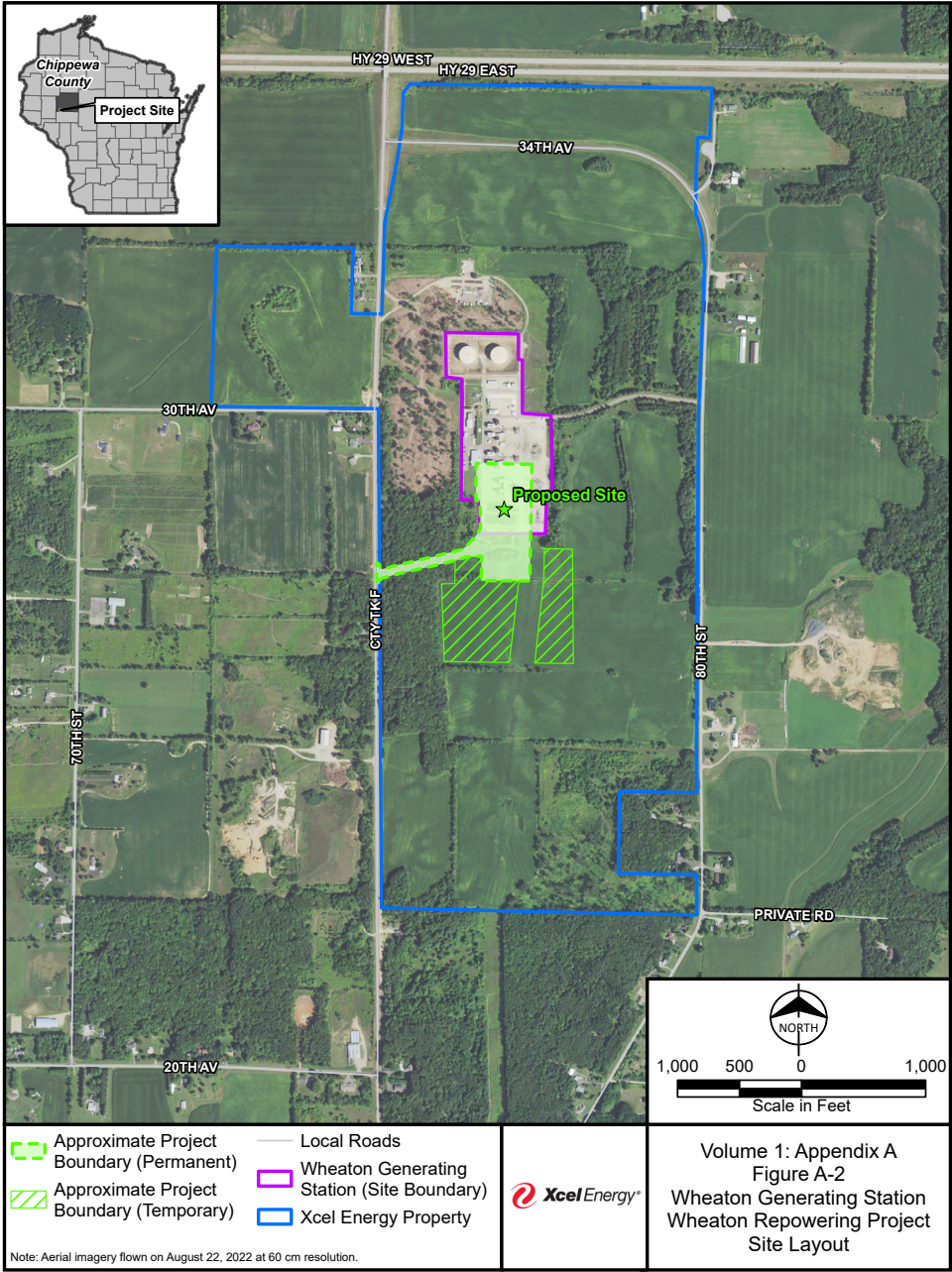
This project will increase plant reliability, improve efficiency and decrease emission rates.

SCHEDULE

Early 2022	Initiate detailed project environmental analysis, detailed design and equipment procurement
Early 2023	File Public Service Commission of Wisconsin Certificate of Public Convenience and Necessity and Wisconsin Department of Natural Resources permit applications
Early 2024	Anticipate permit approvals
Spring 2024	Construction start
Fall 2025	New equipment in service, retirement of remaining existing units

As the project continues, we will provide our stakeholders with additional details.

Please note that the schedule is subject to change.



Contacts:
Nick Gamble, Xcel Energy project manager,
651-734-3594 or nicholas.j.gamble@xcelenergy.com

